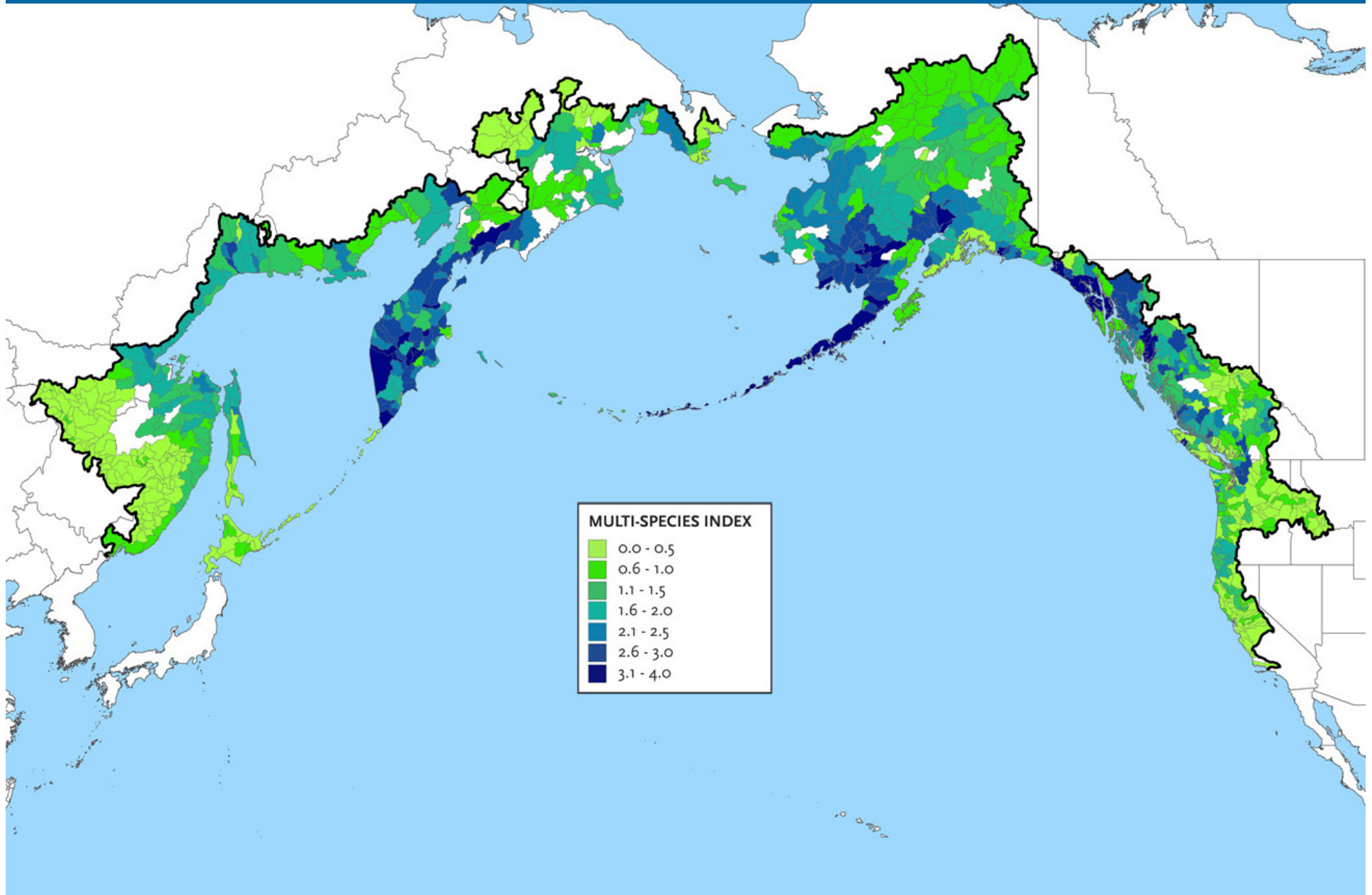




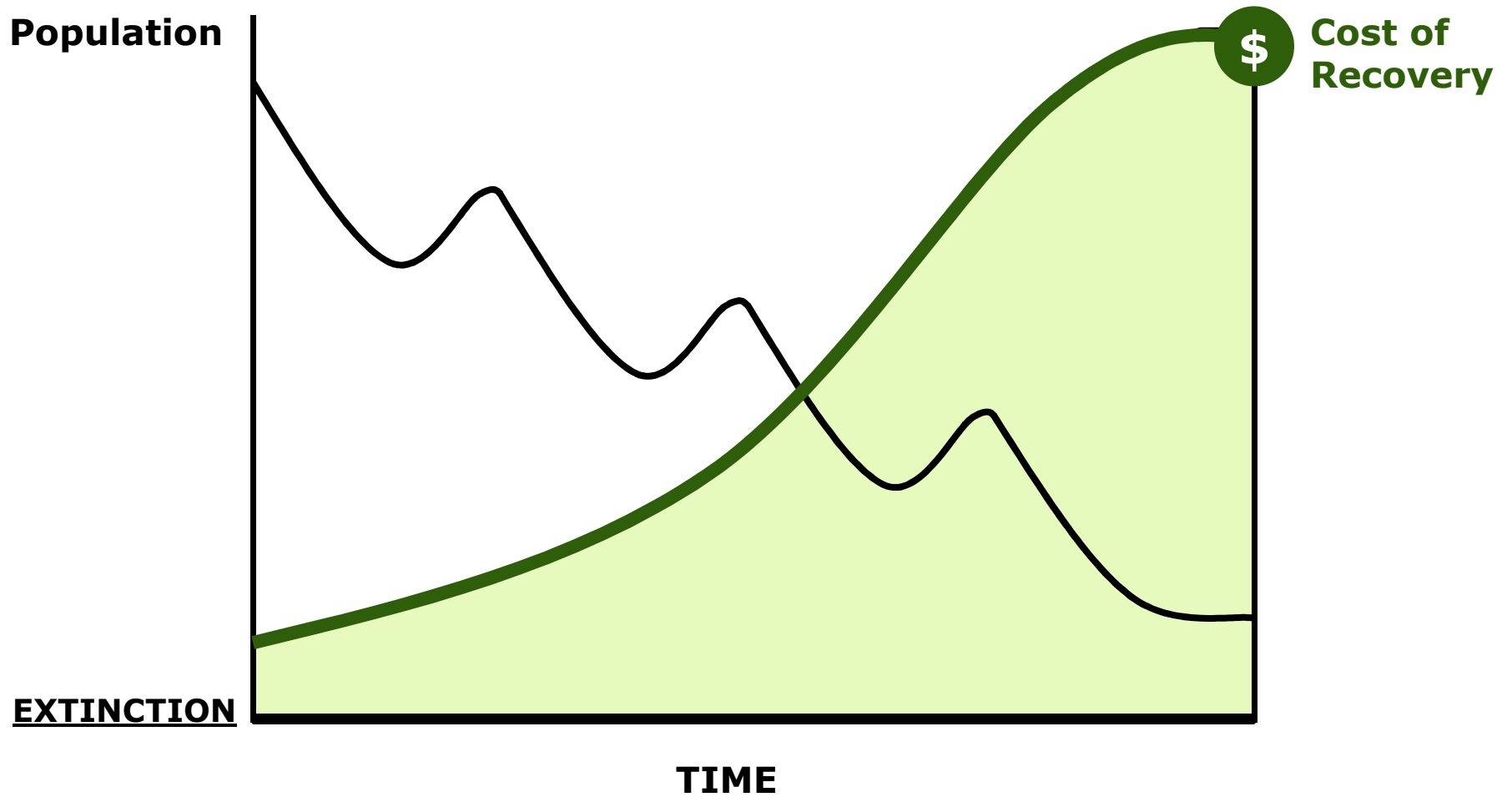
A Pacific Rim Network of Salmon Strongholds

Guido Rahr, Wild Salmon Center • February 2009

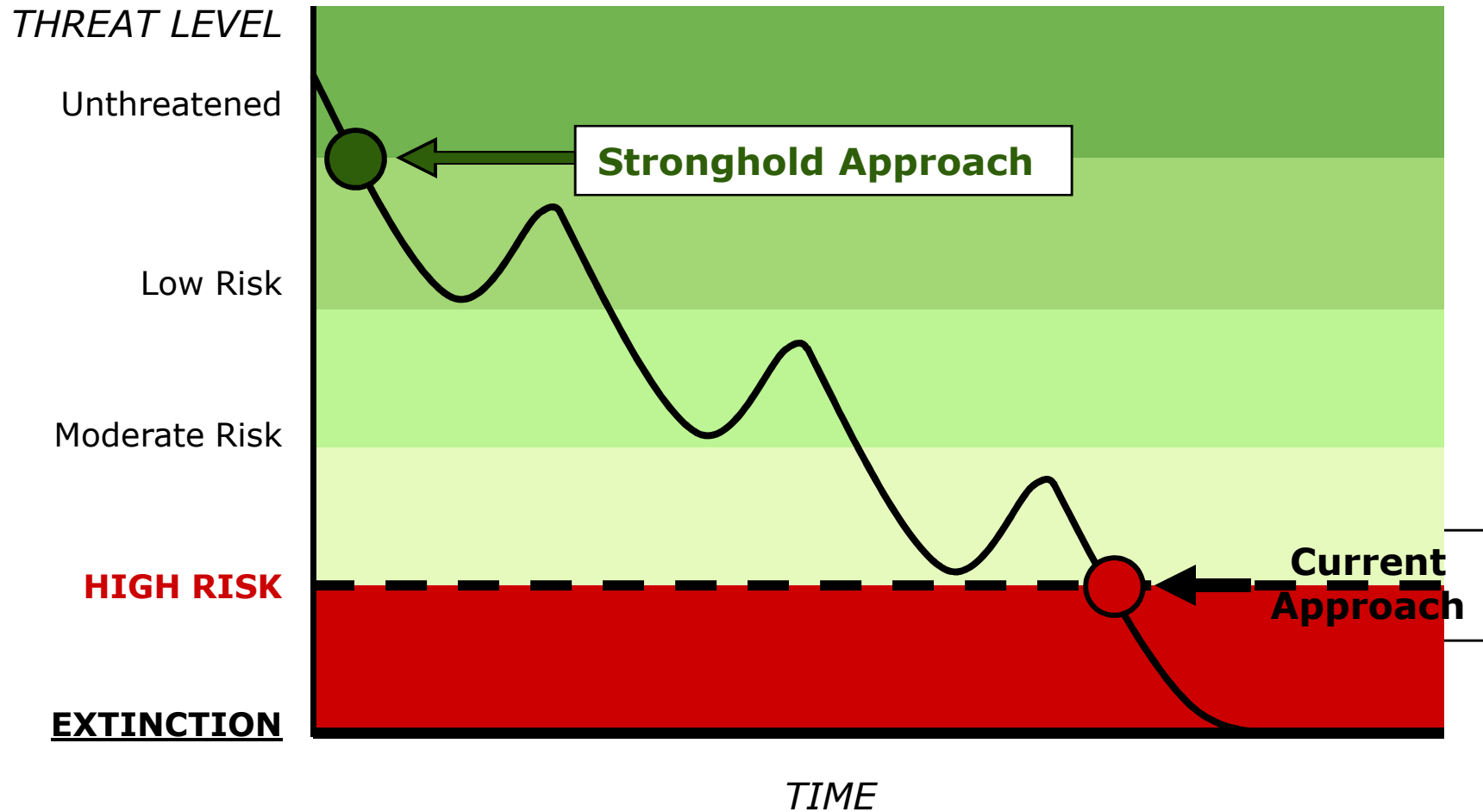
The Pacific Salmon Conservation Assessment



Proactive Salmon Conservation



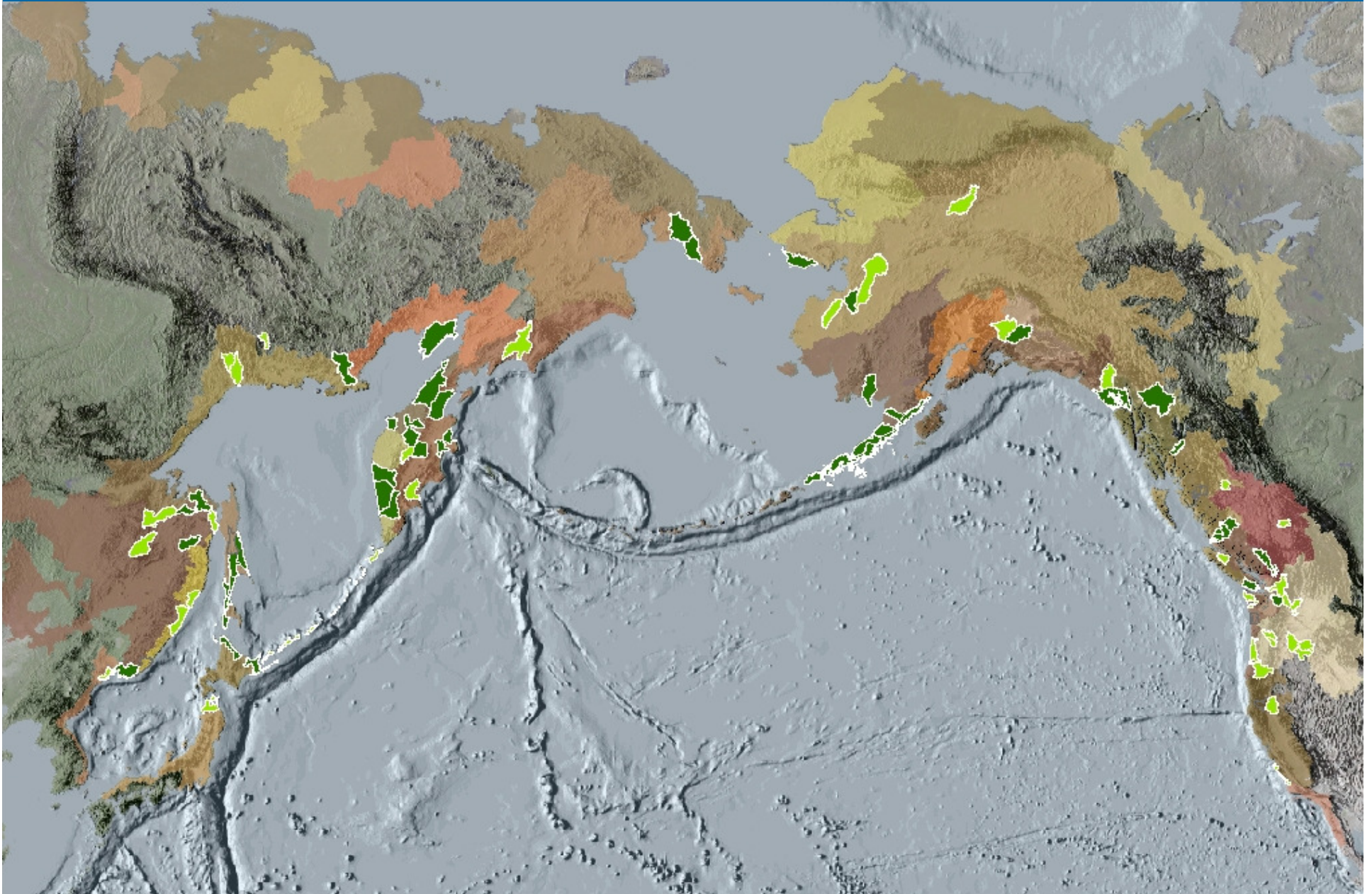
Proactive Salmon Conservation



Salmon Strongholds



Salmon Stronghold Network



Goals and objectives of stronghold strategy

- Ensure the long-term health of the most important wild salmon ecosystems across the Northern Pacific Rim
- Use these strongholds as places to test, demonstrate and exchange new strategies for salmon conservation and management.

What will it take to protect the strongholds?

- Elevate the status of strongholds as global priorities for conservation
- Commitment to make wild salmon conservation primary natural resource management policy in stronghold basins
- Accelerated application of the Principles of Salmon Conservation, economic incentives, and for natural resource conservation funding
- Establish “Stronghold Network” to test and share new strategies and support salmon and natural resource managers

Salmon Strongholds



North America Programs and Stronghold Sites

Endorsed Salmon Strongholds

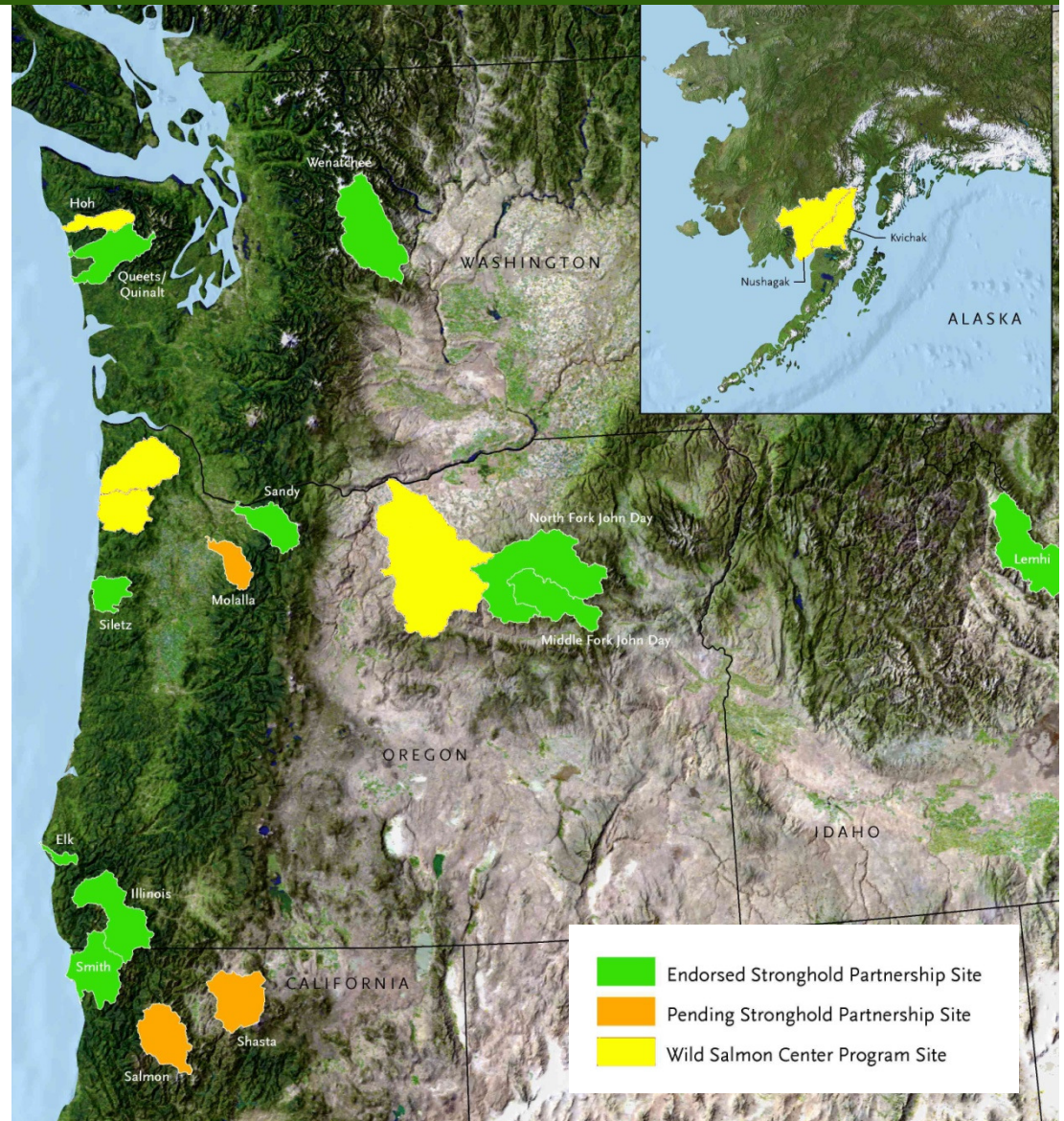
- John Day (OR)
- Sandy (OR)
- Siletz (OR)
- Elk (OR)
- Rogue-Illinois (OR)
- Smith (CA)
- Wenatchee (WA)
- Queets/Quinalt (WA)
- Lemhi (ID)

Pending Salmon Strongholds

- Molalla (OR)
- Shasta (CA)
- Salmon (CA)

Program Sites

- Hoh (WA)
- Nehalem/Tillamook (OR)
- John Day (OR)
- Illinois/Rogue (OR/CA)
- Nushagak/Kvichak (AK)



Salmon Strongholds in Russian Far East



Salmon Strongholds





www.wildsalmoncenter.org