

Sarufutsu Ito Conservation Council and its Activities

December 10, 2011

Sarufutsu Ito Conservation Council

Promote Conservation of Sakhalin Taimen Inhabiting the Sarufutsu Region of Hokkaido

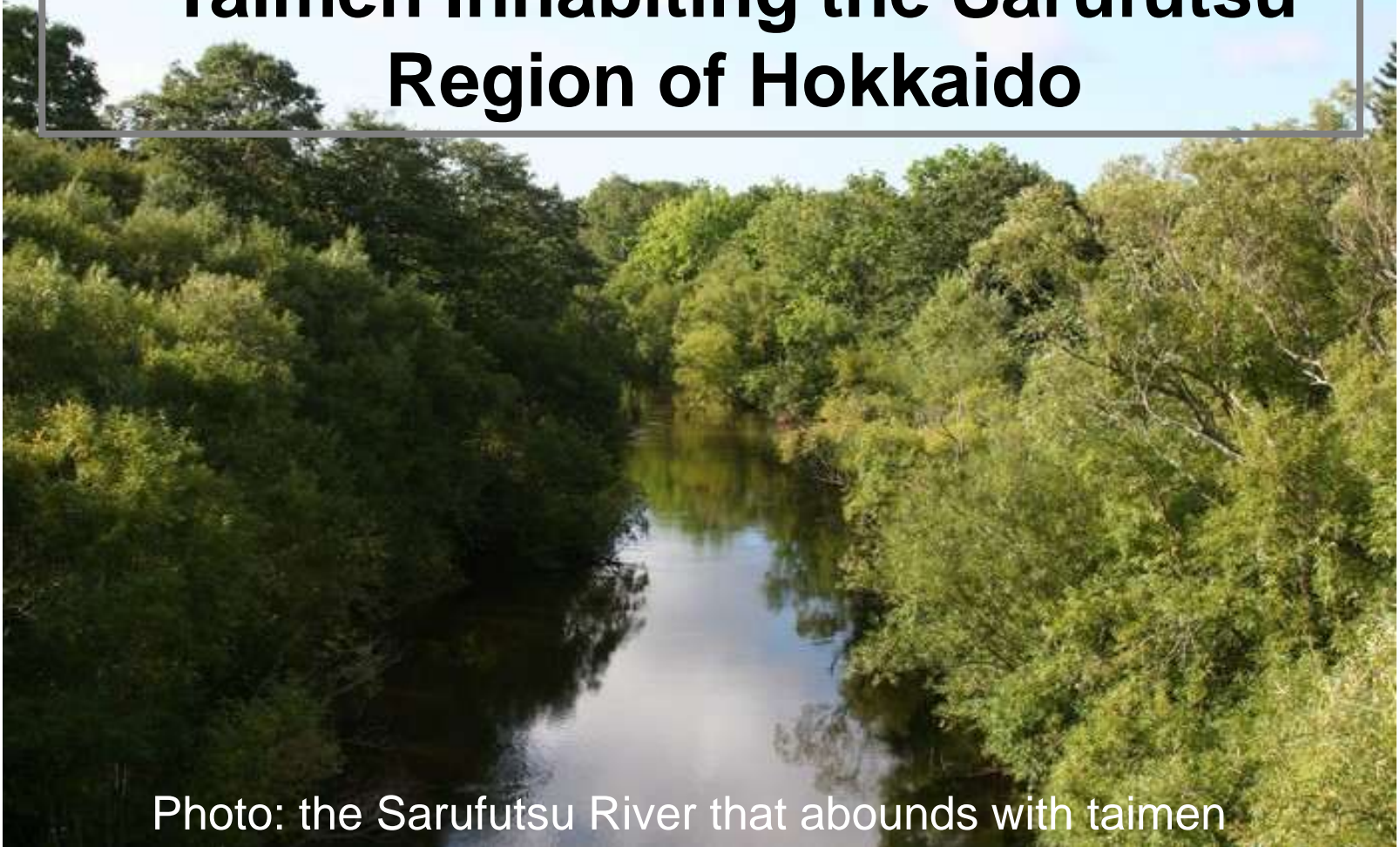


Photo: the Sarufutsu River that abounds with taimen

Sarufutsu Village

北海道宗谷郡猿払村

The northernmost village in Japan

28.6 km from east to west; 34.4 km from north to south

Area 590 km²

Population 2,800 (as of September 2011)

Primary industries, i.e. agriculture and fisheries, as key industries (e.g., milk and scalop)



Activities of SLCC and Ito-no-Kai

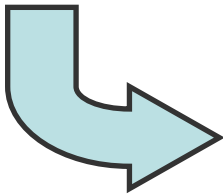


Activities of SICC and Itou-no-Kai



Why taimen survived in Sarufutsu?

1. Watershed is covered with dense forest;
2. Barriers to migration (dams) are rare (i.e., the river and its tributaries are not fragmented)
3. Meandering channels are well preserved, especially in headwater reaches; and
4. Closely located to the center of its distribution, Sakhalin Island



No decline of taimen abundance observed over the last 20 years in the Sarufutsu River

Oji Paper's Forest in Sarufutsu

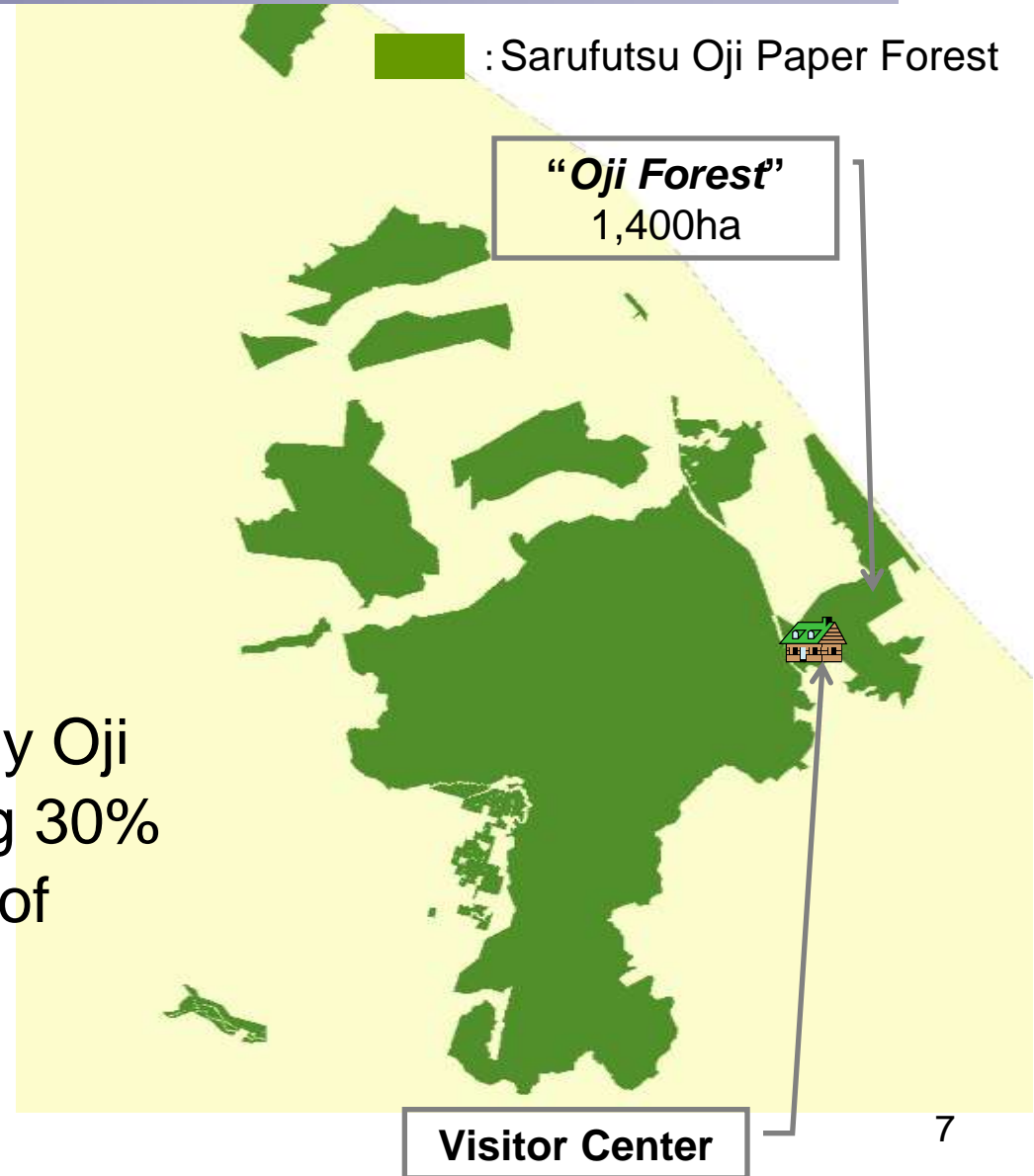
- Address

Sarufutsu Village, Soya,
Hokkaido

- Area

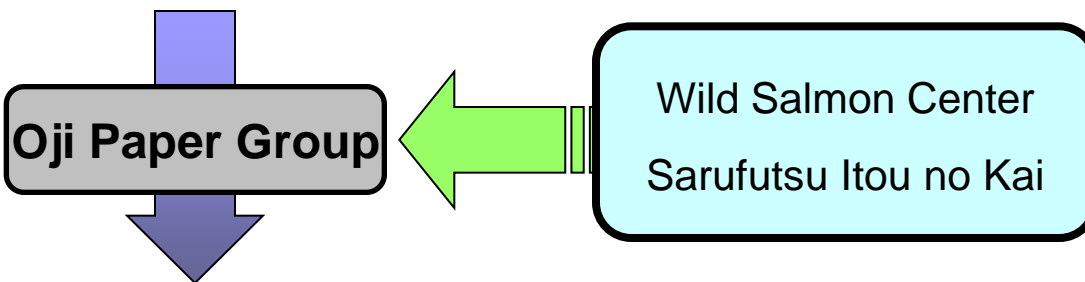
17,290 ha

(The largest forest owned by Oji Paper in Japan, occupying 30% of Sarufutsu Village, 90% of which is natural forest)



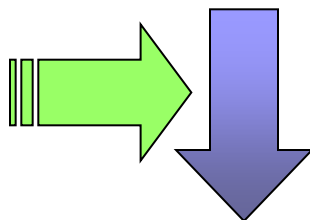
Background of SICCC

The Sarufutsu River supports important habitats for taimen.
Most of the habitats are owned by Oji Paper Group.



Conservation area was established inside
Oji Paper Forest in Sarufutsu

Cooperation with stakeholders is important!



Members:
Itou no Kai, Sarufutsu Village,
Oji Paper, Researchers, etc.

**The foundation of Sarufutsu Itou
Conservation Council**

Activities of SICC

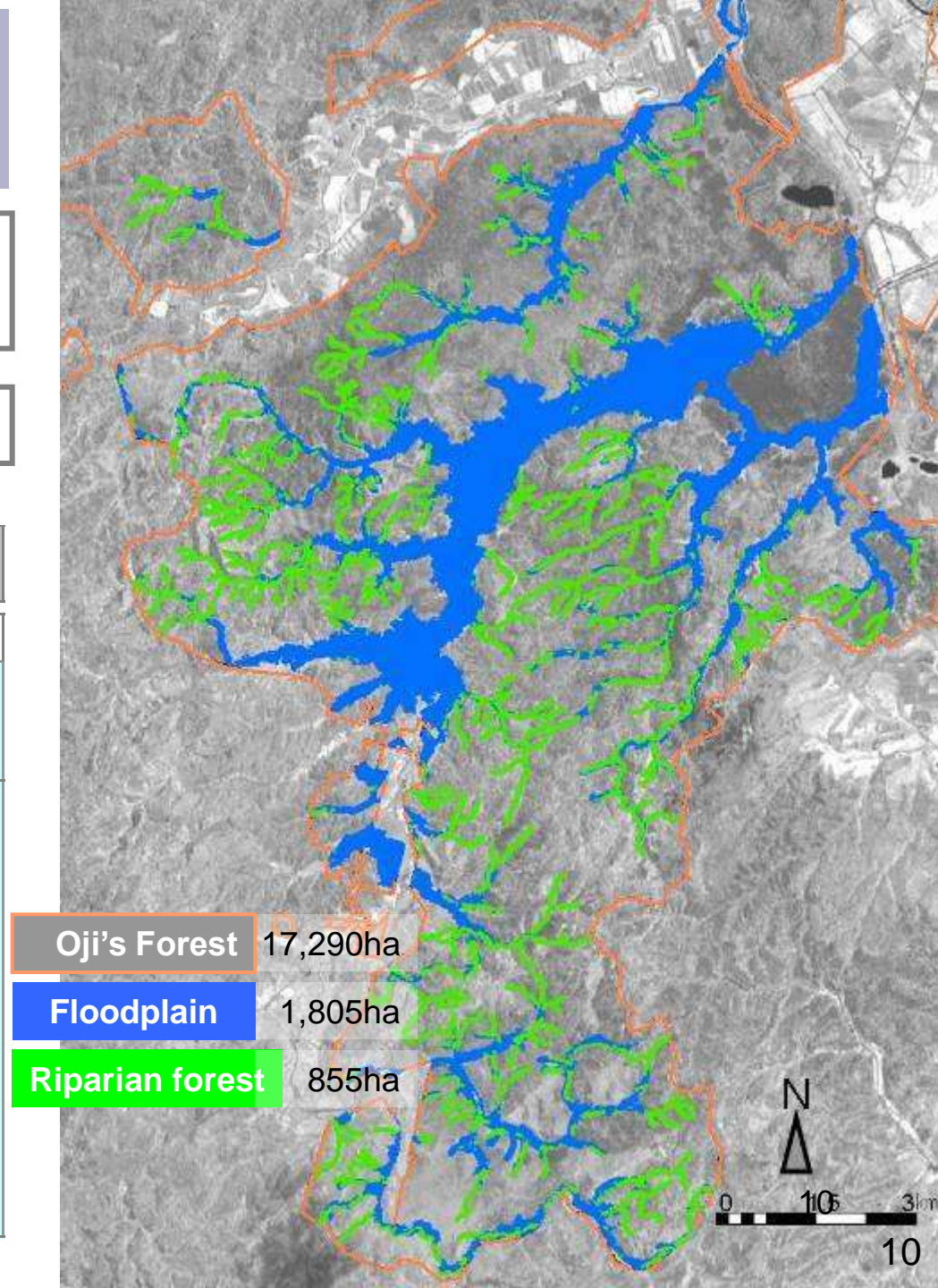
1. Conservation of Sakhalin taimen populations in collaboration with forest owners surrounding Oji Paper Forest, administrative bodies (e.g. Sarufutsu Village), and NPOs;
2. Provision of research field for taimen researchers;
3. Educational activities;
4. Public relations activities; and
5. Exchange activities with other organizations.

Oji Paper Conservation Area

Help sustain primary ecological functions

No logging (in principle)

| | |
|--|--|
| Oji Paper Forest | 17,290 ha (100.0%) |
| Conservation Area | 2,660 ha (15.4%) |
| Floodplain | Riparian forest |
| 1,805 ha (10.4%) | 855 ha (4.9%) |
| <ul style="list-style-type: none"> * Streams and wetlands that are submerged during floods * Important rearing habitat for juveniles | <ul style="list-style-type: none"> * 30-m buffer zone on both left and right banks (distance equivalent to the tallest tree) * All reaches regardless of channel gradient * Riparian forest forms important taimen habitats |

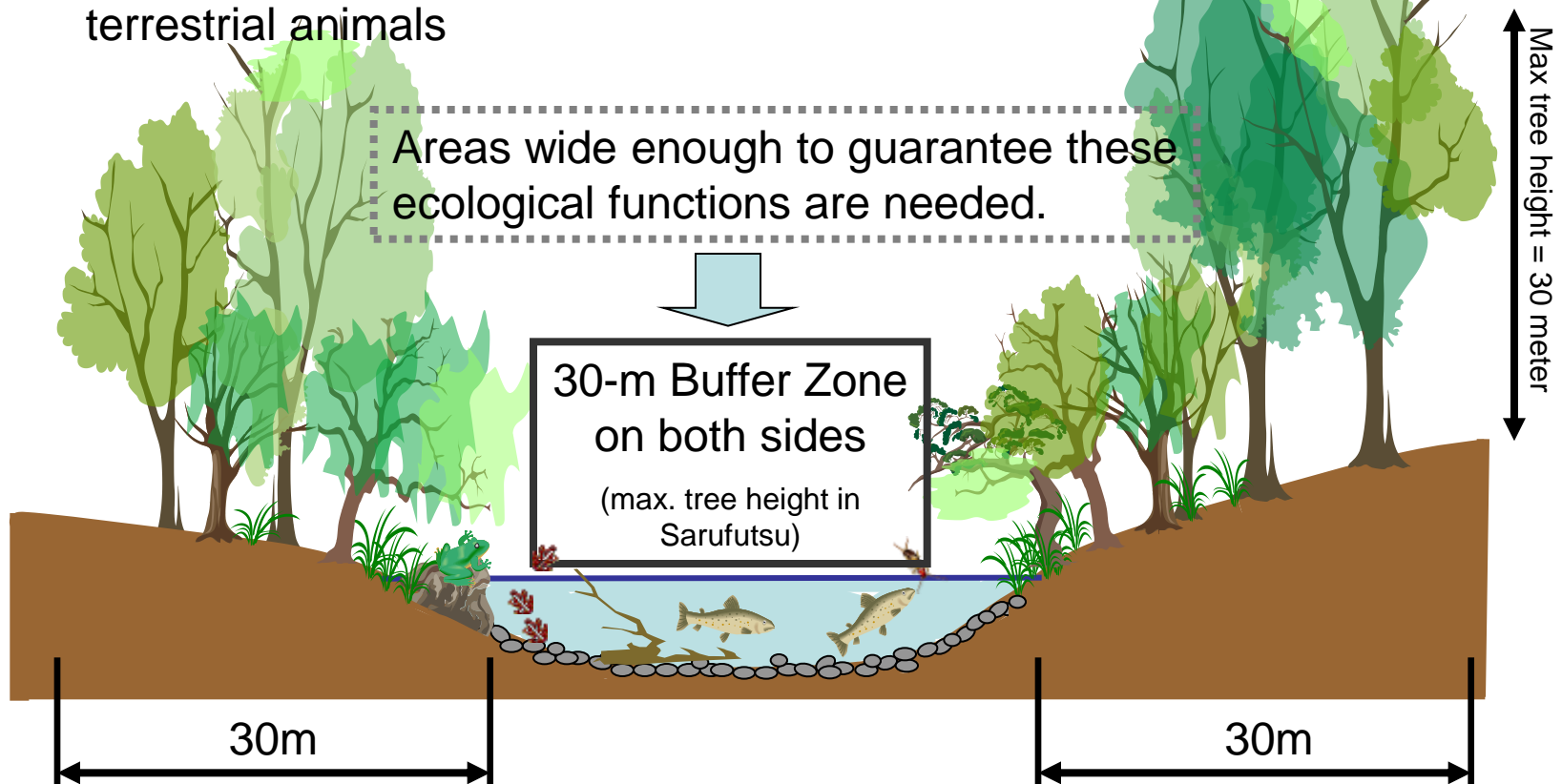


| | |
|------------------------|----------|
| Oji's Forest | 17,290ha |
| Floodplain | 1,805ha |
| Riparian forest | 855ha |

Conservation of Riparian Forest

■ Roles of Riparian Forest

1. Shading → Maintains low water temperature
2. Organic matter → Provides fish with terrestrial insects as food
3. Woody debris → Provides fish with cover and refuge
4. Water purification → Prevents sediment on spawning grounds
5. Habitats for aquatic & terrestrial animals → Contribute to biodiversity



Autumn taimen fishing with good manners!



Spawning run



A stream with taimen – its lower reach



A stream with taimen – its upper reach



Let's pass on streams where people
can fish for taimen forever!

